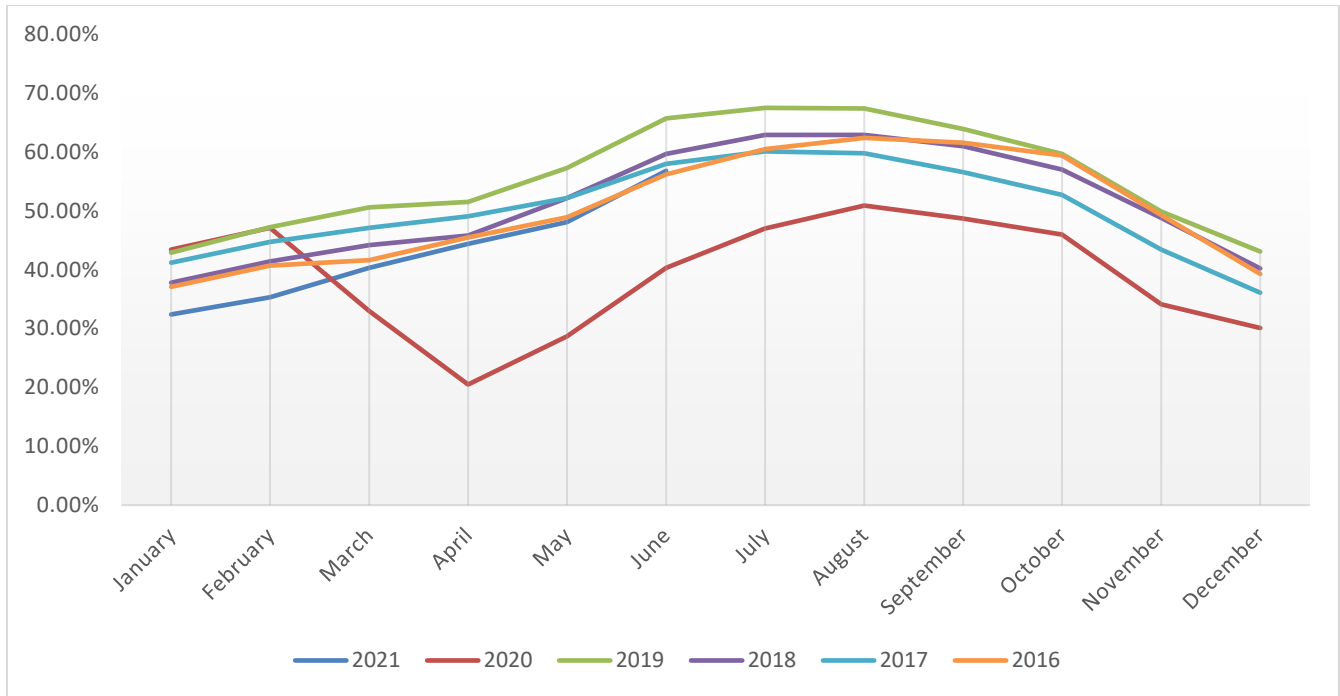


## North Dakota Industry Dashboard – Q2 2021

### Monthly Statewide Hotel Occupancy (%)

Source: Smith Travel Research

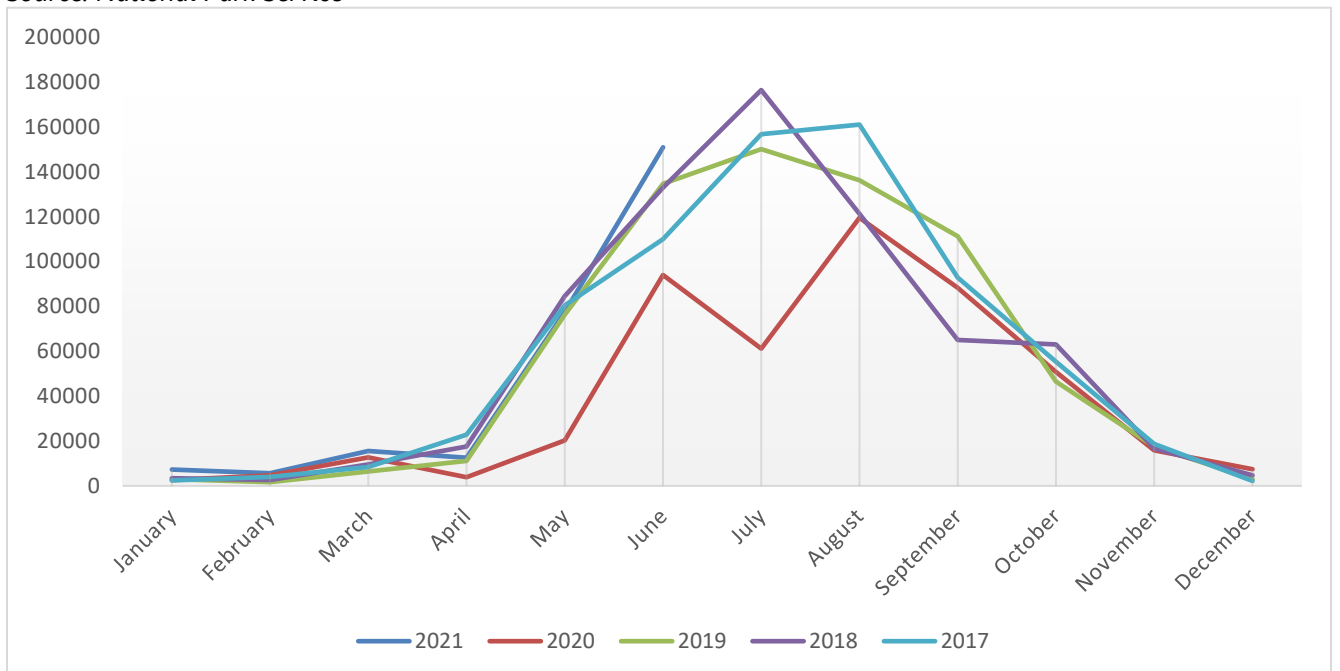


### Hotel Data

	June 2021			Year-to-Date		
	Occ	ADR	RevPAR	Occ	ADR	RevPAR
United States	66.1%	\$129.00	\$85.31	53.8%	\$111.08	\$59.77
West North Central Region	63.2%	\$103.40	\$65.32	46.7%	\$88.68	\$41.38
North Dakota	56.8%	\$82.72	\$46.95	42.8%	\$77.03	\$32.93

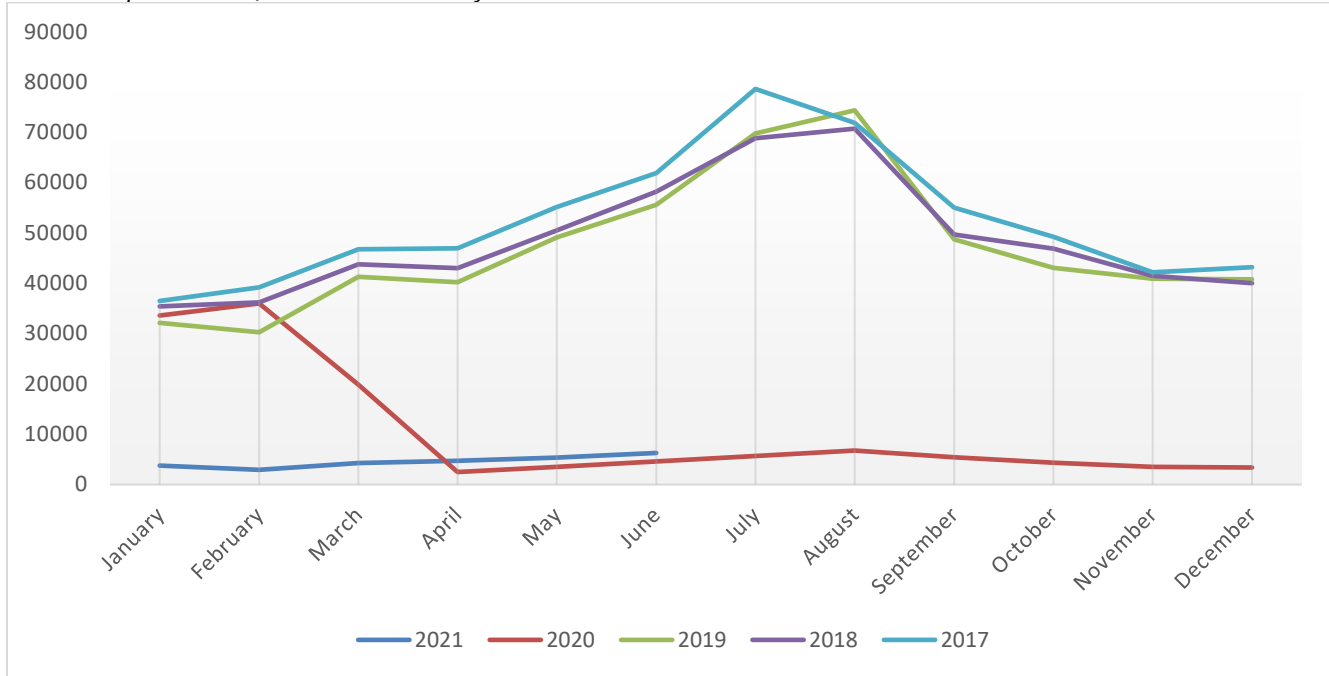
### Theodore Roosevelt National Park Visitation

Source: National Park Service



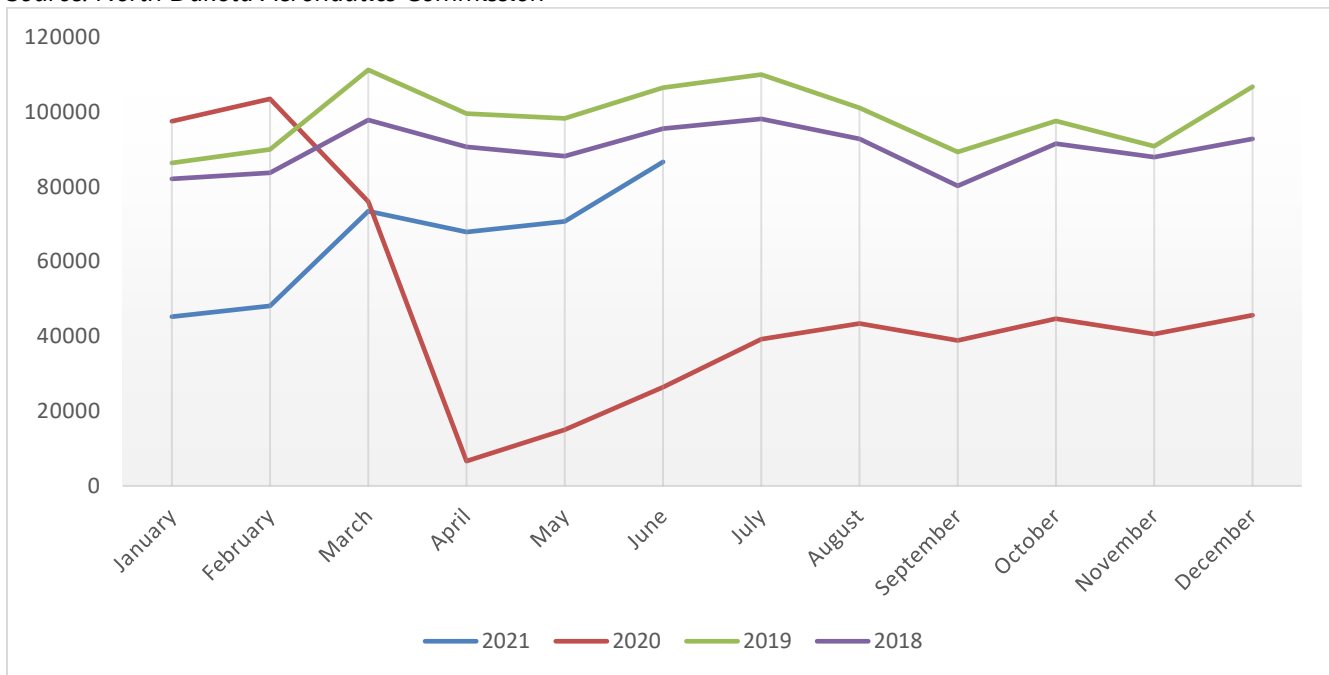
### Canadian Border Crossings (Autos)

Source: Department of Homeland Security



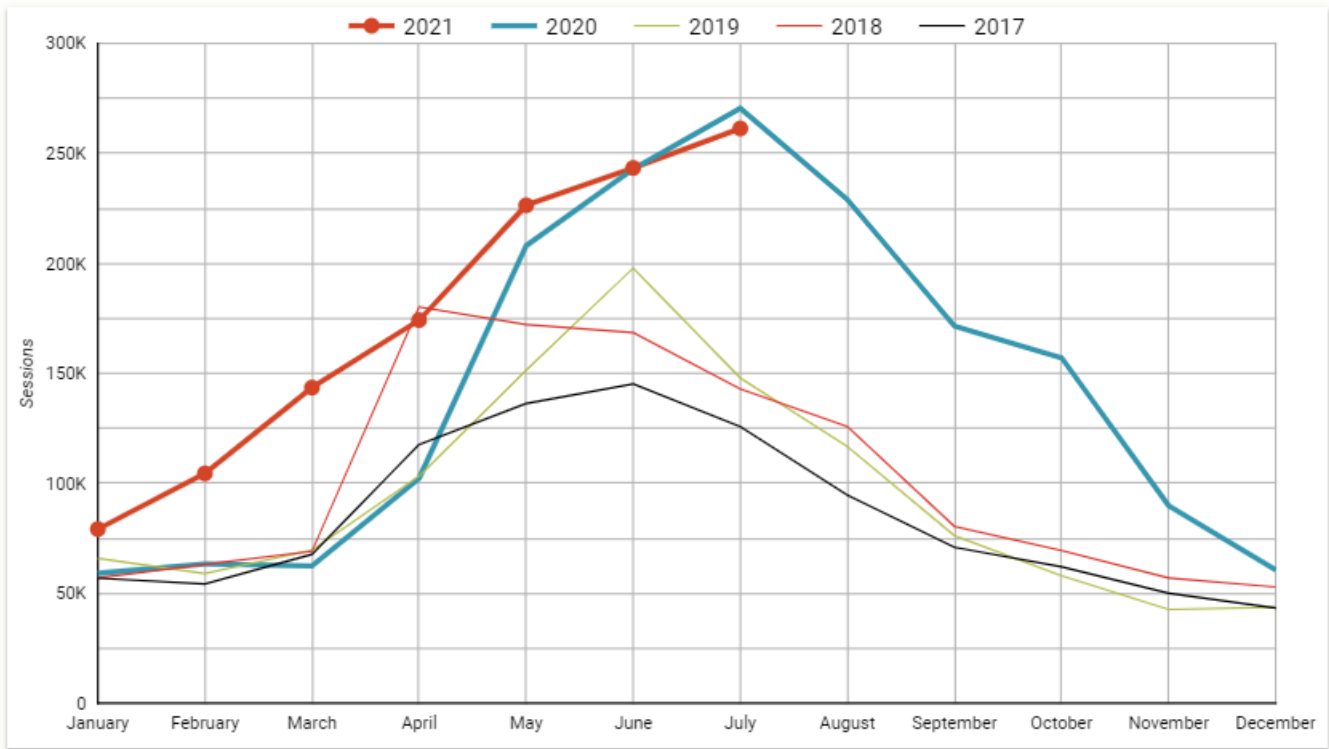
### In-State Deplanements

Source: North Dakota Aeronautics Commission



### Visits to NDtourism.com

Source: Google Analytics



### Traditional Inquiries

Source: North Dakota Tourism

